

ENGINEERING HERITAGE VICTORIA
Early Public Electricity Supply in Melbourne
GUEST SPEAKER PROGRAM



**ENGINEERS
AUSTRALIA**

Thursday 16 June 2011
5:30pm (for refreshments)
6:00 until 7:30pm
Engineers Australia, John Connell Auditorium
21 Bedford Street, North Melbourne

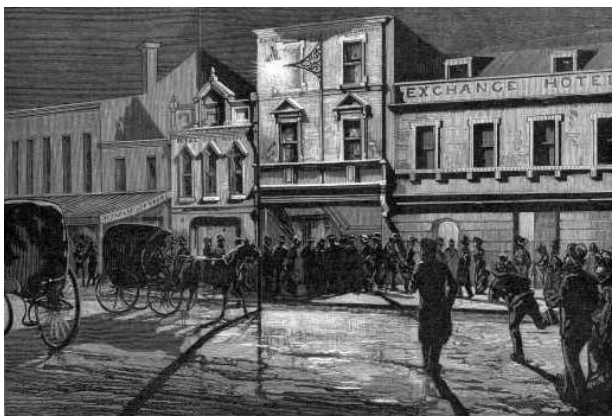
Presented by Miles Pierce

In 1882 'Marvellous Melbourne' was in the vanguard of public electricity supply schemes with a small central generating station established by the Australian Electric Company in Russell Place. Other privately financed electricity supply ventures followed and by the beginning of the next decade two substantive power stations were operating in suburban Richmond. In 1894, the Melbourne City Council inaugurated its Spencer Street power station to supply arc lighting in city streets and private consumers in adjoining MCC administered areas.

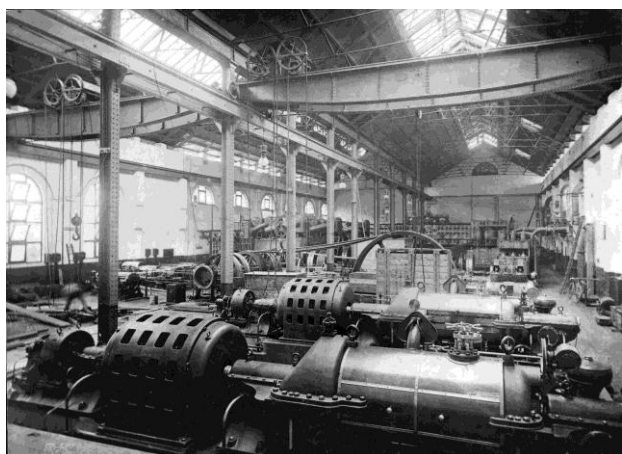
The illustrated presentation will outline the emergence and development of public electricity supply in Melbourne from the 1880s to the first decades of the twentieth century when electricity supply was the province of private enterprise - as it is again now - and municipal undertakings. The presentation will be based upon the paper on the same subject presented by the speaker to the Australasian Engineering Heritage Conference in Dunedin, New Zealand, in 2009.

About the Speaker:

Miles Pierce FIEAust, CPEng, is a retired electrical (power) engineer who spent the majority of his career with GHD Consulting Engineers where he was for many years Principal Electrical Engineer in the Victoria practice of the firm. During his time at GHD he was involved in a wide range of projects including electricity generation, distribution and utilisation. Miles has had a long term interest in engineering and industrial history and heritage and is currently Chairman of Engineering Heritage Victoria.



Arc light demonstration, Swanston Street, 1880



Spencer Street Power Station, Machine Hall, 1908

This is a free event.

Registration at www.engineersaustralia.org.au/divisions/victoria-division/events is preferred.

Contact for queries: Owen Peake owen.peake@bigpond.com

Attendance may be credited towards Engineers Australia Continuing Professional Development (CPD) requirements